

## CONTEST PLAY

MAY 11



"The Pink Dress" was written by Donald Elser. This is the play with which Kermit was represented in the 1956 District Texas Interscholastic League One Act Play Contest at Crane on March 23. Although the play was not selected as one of the top two, all five actors received oral commendation from the Judge on their acting. This play was also presented at the Spring Speech Festival, May 11.

## SPRING SPEECH FESTIVAL

MAY 11



"A Hint To Brides" (Top) and "When Shakespeare's Ladies Meet" were one act plays presented in the Spring Speech Festival.

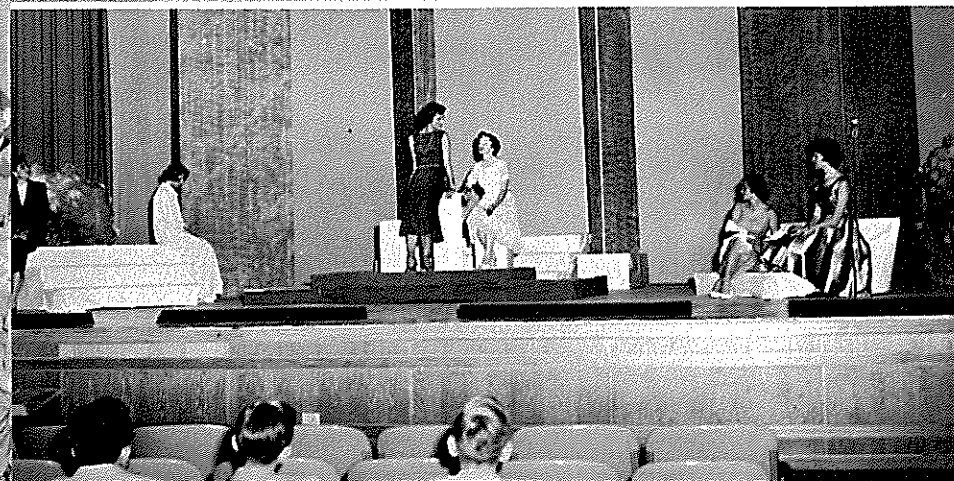
### "A HINT TO BRIDES"

Cast  
Larry . . . . . BILLY VAIL  
Flo . . . . . LINDA COOK  
Albert Fenton . . . . RICHARD STOVALL  
Irene . . . . . GLYNDA DOSS

### "WHEN SHAKESPEARE'S LADIES MEET"

Cast  
Portia . . . . Dorothy Jackson  
Katherine . . . Arliss Froelich  
Ophelia . . . . Ellen Stewart  
Desdemona . . . Billie Kirkpatrick  
Juliet . . . . . Carol McCorcle  
Cleopatra . . . . Reta McCurley

DIRECTOR  
Sid Holden



## SPRING SPEECH FESTIVAL

MAY 11

### CHORAL READINGS

This marks the fourth consecutive year in which Speech I students have been presented in Choral Reading. It gives them the opportunity of making a public speaking appearance in an unusual and interesting manner.



## K CLUB BANQUET

MAY 15



The annual K Club Banquet was given in the high school cafeteria in honor of those who received K awards. The tables were centered with flowers and ferns. A special program was presented with Sallye Huff singing a solo, accompanist, Beth Avary, and a drum duet by Sallie Raines and Mike Hammett.